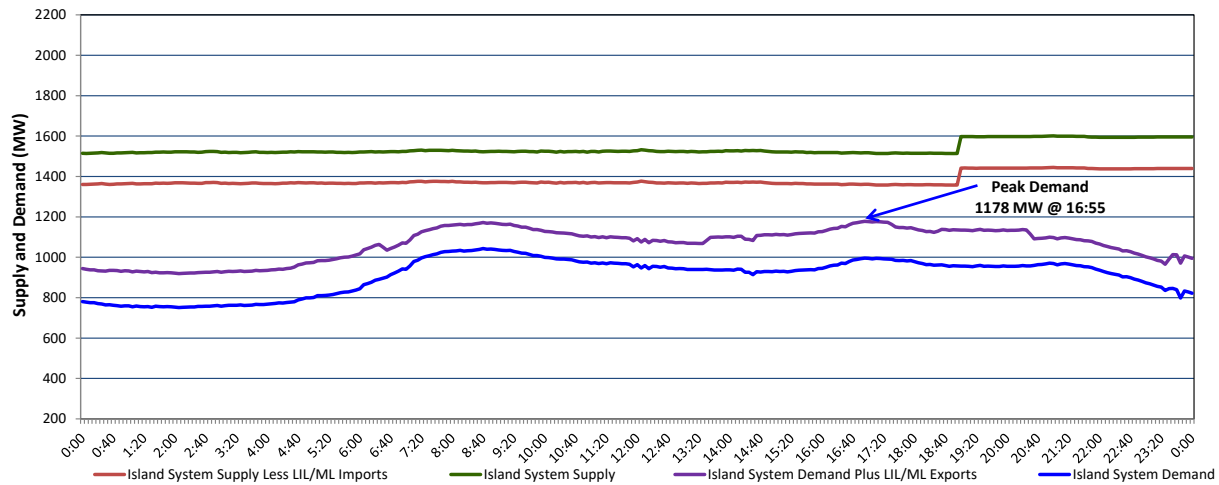


Newfoundland Labrador Hydro (NLH) Supply and Demand Status Report Filed Friday, May 06, 2022

Section 1 Island Interconnected System Supply, Demand & Exports Actual 24 Hour System Performance For Thursday, May 05, 2022



Supply Notes For May 05, 2022

1,2

- A As of 0857 hours, April 04, 2022, Holyrood Unit 3 unavailable due to planned outage (150 MW).
- B As of 0813 hours, April 19, 2022, Holyrood Unit 2 returned to service 150 MW (170 MW).
- C As of 1210 hours, April 22, 2022, Bay d'Espoir Unit 2 unavailable due to planned outage (76.5 MW).
- D As of 2107 hours, April 26, 2022, Holyrood Unit 1 available but not operating (170 MW).
- E As of 0908 hours, May 01, 2022, Holyrood Gas Turbine unavailable due to planned outage (123.5 MW).
- F As of 1558 hours, May 03, 2022, Granite Canal Unit unavailable (40 MW).
- G At 1900 hours, May 05, 2022, Upper Salmon Unit available (84 MW).

Section 2 Island Interconnected Supply and Demand

Fri, May 06, 2022	Island System Outlook ³		Seven-Day Forecast	Temperature (°C)		Island System Daily Peak Demand (MW)	
				Morning	Evening	Forecast	Adjusted ⁷
Available Island System Supply: ⁵	1,761	MW	Friday, May 6, 2022	3	1	1,185	1,185
NLH Island Generation: ^{4,8}	1,285	MW	Saturday, May 7, 2022	0	2	1,080	1,080
NLH Island Power Purchases: ⁶	125	MW	Sunday, May 8, 2022	2	2	1,020	1,020
Other Island Generation:	195	MW	Monday, May 9, 2022	2	3	1,090	1,090
ML/LIL Imports:	156	MW	Tuesday, May 10, 2022	4	8	975	975
Current St. John's Temperature & Windchill:	5 °C	N/A	Wednesday, May 11, 2022	9	10	830	830
7-Day Island Peak Demand Forecast:	1,185	MW	Thursday, May 12, 2022	10	10	840	840

Supply Notes For May 06, 2022

3

- H At 0226 hours, May 06, 2022, Holyrood Unit 1 returned to service (170 MW).

- Notes:
1. Generation outages for running and corrective maintenance are included. These are not unusual for power system operations. They generally do not impact customer supply. The power system operators schedule outages to system equipment whenever possible to coincide with periods when customer demands are low and sufficient supply reserves are available. However, from time to time equipment outages are necessary and reserves may be impacted.
 2. Due to the Island system having no synchronous connections to the larger North American grid, when there is a sudden loss of large generating units there may be a requirement for some customer's load to be interrupted for short periods to bring generation output equal to customer demand. This automatic action of power system protection, referred to as under frequency load shedding (UFLS), is necessary to ensure the integrity and reliability of system equipment. Under frequency events have typically occurred 5 to 8 times per year on the Island Interconnected System and the resultant customer load interruptions are generally less than 30 minutes. With the activation of the Maritime Link frequency controller during the winter of 2018, UFLS events have occurred less frequently.
 3. As of 0800 Hours.
 4. Gross output including station service at Holyrood (24.5 MW) and improved NLH hydraulic output due to water levels (35 MW).
 5. Gross output from all Island sources (including Note 4).
 6. NLH Island Power Purchases include: CBPP Co-Gen, Nalcor Exploits, Rattle Brook, Star Lake, Wind Generation and capacity assistance (when applicable).
 7. Adjusted for curtailable load, market activities and the impact of voltage reduction when applicable.
 8. Due to limitations inherent in the design of combustion turbines, the output of combustion turbines may be reduced in the event that ambient temperatures exceed the threshold

Section 3 Island Peak Demand Information Previous Day Actual Peak and Current Day Forecast Peak

Thu, May 05, 2022	Actual Island Peak Demand ⁹	16:55	1,178 MW
Fri, May 06, 2022	Forecast Island Peak Demand		1,185 MW

Notes: 9. Island Demand / LIL / ML Exports (where applicable) is supplied by NLH generation and purchases, plus generation owned and operated by Newfoundland Power and Corner Brook Pulp & Paper (Deer Lake Power, DLP).